

SKY Harbor Weekly Briefing

Issuance Strikes Back

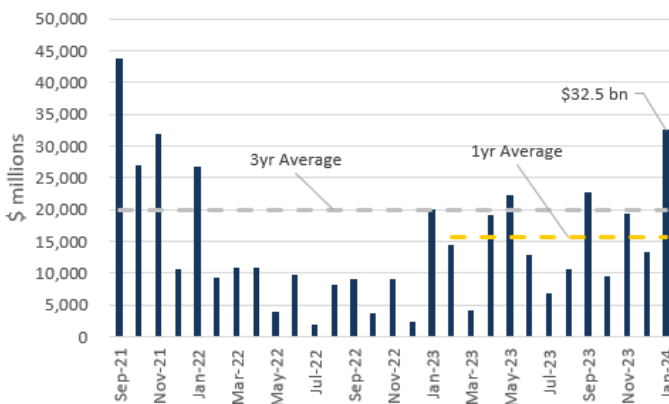
Primary market activity accelerated in January, with monthly gross issuance up meaningfully from anemic levels in '22 and '23. This rebound comes at a pivotal time, with markets demonstrating resilience despite lingering concerns that rates will remain higher for longer. In this *Weekly Briefing*, we take a closer look at January issuance, with a focus on premiums (historically average) and the relative aggressiveness of management teams (quite limited).

A January Rebound

January gross issuance exceeded \$32bn, representing the highest volume month since September '21, and coming in nearly twice the trailing 3-year average. Additionally, issuance has remained robust in February, with the monthly total running at a similar pace thus far. Importantly, **investor appetite for lower-rated credit is on the rise, alleviating prior concerns that more speculatively levered capital structures would need alternative solutions to meet financing needs.** In fact, the proportion of single-B and CCC-rated deals in January exceeded their trailing 12-month share, directionally consistent with recent upside surprise to the Senior Loan Officer Opinion Survey on Bank Lending standards (see our prior *Weekly Briefing* [here](#)).

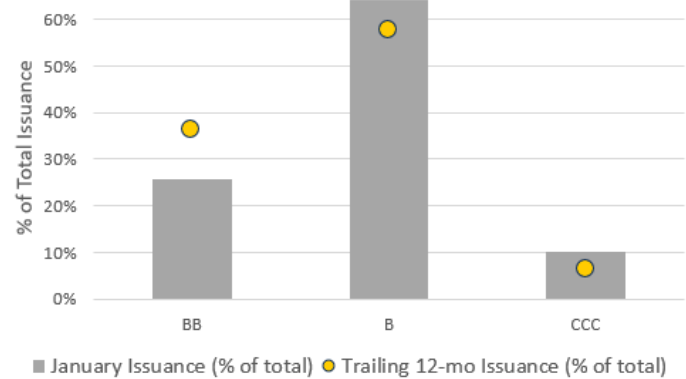
January New Issuance Highest In Over 2 Years

monthly data



Issuance Skewed Toward Lower-Rated Credit

Jan '24 data



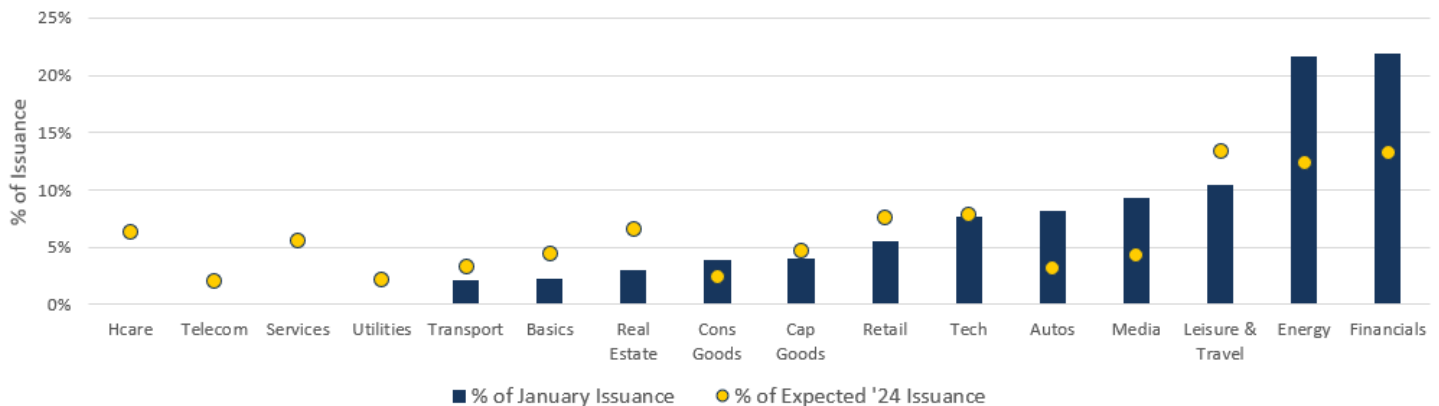
Source: SKY Harbor, BofA Merrill Lynch, Bloomberg

Sector Resilience

In typical fashion, primary issuance has come in waves, with the Financials and Energy sectors particularly active to start the year. However, **we have noticed little to no sustained impact on secondary market trading levels based on new deal proliferation.** In past analyses, we have found that strong sector performance typically leads to added issuance as bankers and management teams look to be opportunistic. This at times has led to investor fatigue, with sector comps often suffering as new debt crowds out interest in existing issues. In our view, investor anticipation of heightened issuance given an approaching maturity wall, and limited net new issuance (most deals are purely for refinancing) have muted downside thus far.

Issuance Disproportionately High in Energy and Financials; Expect More to Come in Leisure and Healthcare

note: expected issuance based on debt due within 24 months



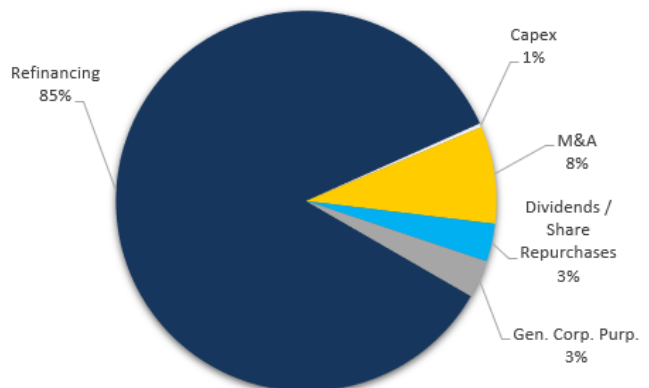
Source: SKY Harbor, BofA Merrill Lynch, Bloomberg

Management Teams Remain Conservative

The boost in primary market activity has not, at least yet, led to increased aggressiveness among corporate management teams. As demonstrated below, **85% of all new issuance in January was for refinancing, well above the trailing 10-year average (~57% of issuance)**. We think the lack of shareholder friendly activity thus far makes sense, as such options appear costly (index yields remain top quartile in nature), and equity indices continue to set fresh highs. Relative to FY23, we have not yet seen any meaningful uptick in debt issued to support acquisitions or buyouts, but suspect that category may trend upwards as management teams grapple with limited organic growth opportunities in coming quarters.

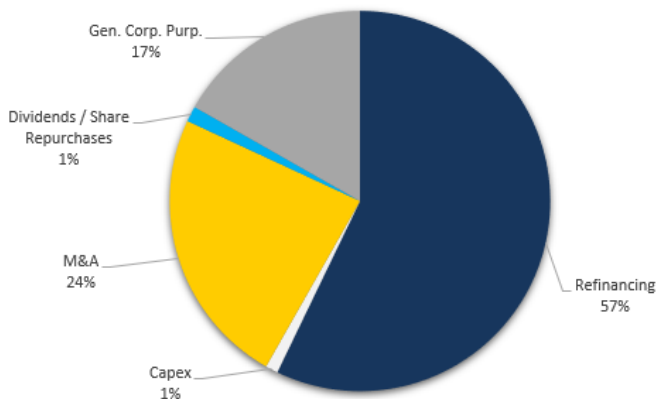
As Expected, Issuance Primarily Being Used to Refinance

January 2024 Issuance Breakdown



Limited Appetite for Shareholder Friendly Initiatives / M&A

Trailing 10-year Issuance Breakdown



Source: SKY Harbor, BofA Merrill Lynch, Bloomberg

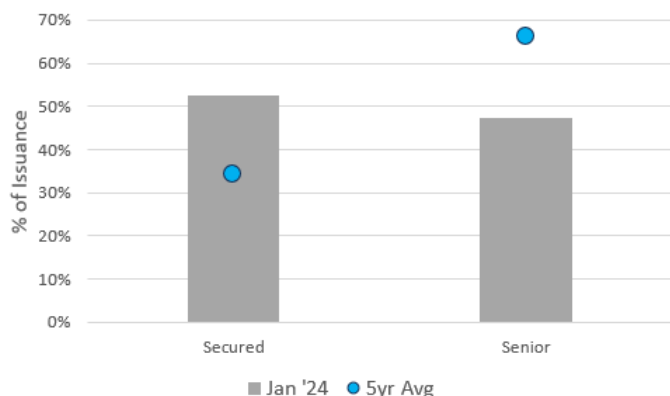
More Debt, Average Premiums

In a *Weekly Briefing* entitled "[Notes from the Road – Miami Edition](#)" from early October '23, we highlighted that secured issuance penetration of primary market activity was at a 20-year high (then 59%), running at nearly 3x the long-run average of 21%. In January '24, **secured issuance remained elevated at 53%, all in an effort for issuers to utilize unencumbered assets to temper the average cost of debt uptick** when unsecured obligations issued in a near-zero risk free rate environment come due.

At the same time, **premiums offered to investors to incentivize participation in new deals are merely average (~23 bps)** despite the strong uptick in overall volume (as a note, we calculate premiums by comparing coupon levels – adjusted for the presence of original issue discounts – to yields at the conclusion of the first day of secondary market trading). A strong desire for existing holders to roll into the new issue and elevated asset manager cash balances have likely contributed to this dynamic, which in general continues to signal strength in primary markets.

Issuers Continue to Favor Secured Debt

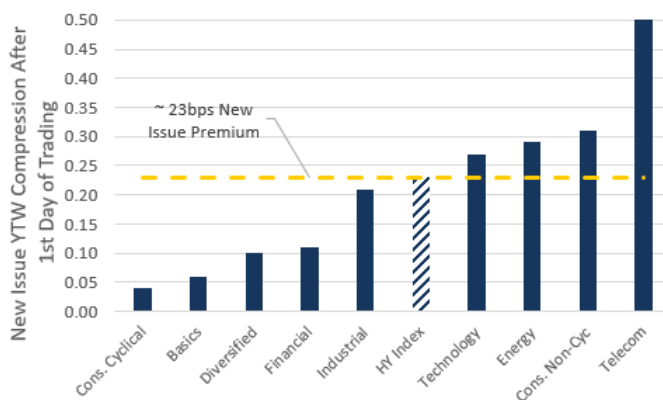
Jan '24 data



Source: SKY Harbor, BofA Merrill Lynch, Bloomberg

Year-to-Date New Issue Premiums In-Line w/ LT Average

grouped by broad sector bucket



Chipping Away

Though not yet a pattern, we are encouraged by primary market strength thus far in 2024, and continue to view the chipping away of the maturity wall as a positive for high yield market sentiment. We remain cognizant that new issue fatigue could eventually pressure secondary market levels, but elevated manager cash balances and lack of net new debt have thus far kept things in balance. For now, we continue to find value in new deals, both from the perspective of average price concessions as well as the opportunity to avoid secondary market bid-ask spreads.

Important Disclosures and Disclaimers

This analysis and the opinions expressed herein are intended solely for institutional and professional investors that are responsible for assessing their own risk tolerances under prevailing market conditions. SKY Harbor Capital Management, LLC ("SKY Harbor") provides this document for informational purposes only. Nothing contained in this document is or should be construed as an advertisement, or an offer to enter any contract, investment advisory agreement, a recommendation to buy or sell securities of any kind, a solicitation of clients, or an offer to invest in any particular fund, product, investment vehicle, or derivative.

This document contains forward-looking statements that are based on SKY Harbor's current views and assumptions. Forward-looking statements such as the findings of our analytical research, our outlook for interest rates, Fed policy, the economy, high yield markets and the like, or our intended adjustments to the portfolios within our strategies are subject to inherent risks, biases and uncertainties that are beyond SKY Harbor's control and may cause actual results to differ materially from the expectations expressed herein.

The information contained herein is subject to change, and SKY Harbor is under no obligation to update any information contained herein. Certain information contained in this document has been obtained from third-party sources and, although believed to be reliable, has not been independently verified, and its accuracy or completeness cannot be guaranteed. SKY Harbor, its affiliates, officers, directors and employees hereby disclaim any liability whatsoever related to the use of this publication or its content and make no express or implied warranties of merchantability or fitness for any particular purpose or use with respect to the data, projections, analysis, content, or conclusions included in this publication.

Investing in securities involves risk of loss and past performance is not necessarily indicative of future results. Fixed income securities, especially high yield debt securities, are subject to loss of income and principal arising from credit risk, which is the risk that the issuer will be unable to make interest and principal payments when due. Material risks in investing in high yield debt securities also include, but are not limited to, opportunity cost (the risk that an issuer's credit trends deteriorate resulting in a higher level of compensation demanded by the market relative to the initial investment), interest rate risk, liquidity risk, selection risk, and overall market risk. In general, issuers of high yield debt securities have a greater likelihood of defaulting on the payment of interest or principal than issuers of investment grade bonds. There can be no assurance that the investment objectives described herein will be achieved or that substantial losses can be avoided.

Gross performance results do not reflect the deduction of investment advisory fees, which would reduce an investor's actual return. For example, assume that \$1 million is invested in an account with the Firm, and this account achieves a 6% compounded annualized return, gross of fees, for five years. At the end of five years that account would grow to \$1,338,226 before the deduction of management fees. Assuming management fees of 0.55% per year are deducted annually from the average annual AUM, the value of the account at the end of five years would be \$1,302,846, which is the equivalent of an annual compounded rate of 5.43%. For a ten-year period, the ending dollar values before and after fees would be \$1,790,848 and \$1,697,408, respectively. SKY Harbor's asset-based fees are generally billed monthly or quarterly in arrears. Please refer to the SKY Harbor's ADV Part 2A or applicable Offering Documents for more information on fees. Consultants supplied with gross results are to use this data in accordance with SEC, CFTC, NFA or the applicable jurisdiction's guidelines.

SKY Harbor is not a tax or legal advisor. Prospective investors should consult their tax or legal advisors before making tax-related investment decisions.

The ICE BofA Index data referenced herein is the property of ICE Data Indices, LLC ("ICE BofA") and/or its licensors and has been licensed for use by SKY Harbor. ICE BofA PERMITS USE OF THE ICE BofA INDICES AND RELATED DATA ON AN "AS IS" BASIS, MAKES NO WARRANTIES REGARDING SAME, DOES NOT GUARANTEE THE SUITABILITY, QUALITY, ACCURACY, TIMELINESS, AND/OR COMPLETENESS OF THE BofA INDICES OR ANY DATA INCLUDED IN, RELATED TO, OR DERIVED THEREFROM, ASSUMES NO LIABILITY IN CONNECTION WITH THE USE OF THE FOREGOING, AND DOES NOT SPONSOR, ENDORSE, OR RECOMMEND SKY Harbor or ANY OF ITS PRODUCTS OR SERVICES.

© 2024 SKY Harbor. This document may not be reproduced or transmitted, in whole or in part, by any means, to third parties without the prior written consent of SKY Harbor.